

Sunday, 21 January, 2024

ALIF Hospital

Empowering Communities: A Comprehensive Guide to Healthcare, Education, and Socioeconomic Well-being



Strategic Wisdom Framework: Crafting a Research Plan for Knowledge Advancement and Innovative Thinking by Dr. Waseem Ahmed – CEO Hopeman Consultants UK

Table of Contents

1. ALIF Hospital
2. Business Plan
3. Compassionate Care Initiative
4. Cost Breakdown and Analysis: ALIF Hospital
5. Architecting Tomorrow: Innovative Designs for a Sustainable Future – ALIF Hospital

ALIF Hospital: Nurturing Health with Compassion, Where
Every Act of Care Resounds with Silent Wisdom.

Dr. Waseem Ahmed

ALIF Hospital

Project Title: ALIF Hospital - Empowering Health for All

Vision:

To be a leading healthcare institution, ALIF Hospital envisions a community where accessible, compassionate, and high-quality medical services empower individuals to lead healthier lives.

Mission:

ALIF Hospital is committed to providing comprehensive eye treatment, gynecological care, and acute health services with a focus on excellence, compassion, and community welfare. Our mission is to address urgent health needs, promote preventive care, and contribute to the overall well-being of the community.

Goals:

Accessible Eye Treatment:

- Establish a state-of-the-art eye care center equipped with advanced diagnostic and treatment facilities.
- Conduct regular eye camps and outreach programs to ensure access to eye care in remote areas.

Gynecological Care Excellence:

- Develop a specialized gynecology unit offering a range of services from routine check-ups to advanced procedures.
- Provide education and awareness programs on women's health and reproductive rights.

Acute Health Services:

- Build an emergency and acute care department with 24/7 availability of skilled medical professionals.
- Collaborate with local communities to enhance awareness of emergency medical services and first aid.

Community Outreach:

- Establish partnerships with local organizations to conduct health awareness programs, workshops, and preventive health camps.

- Implement telemedicine services to extend medical consultations and advice to individuals in remote areas.

Technological Integration:

- Integrate cutting-edge medical technologies for accurate diagnostics and efficient treatment.
- Implement electronic health records (EHR) to streamline patient information and improve continuity of care.

Community Empowerment:

- Create health education initiatives focusing on preventive measures, healthy lifestyles, and disease management.
- Offer financial assistance programs to ensure that quality healthcare is accessible to all, regardless of economic status.

Continuous Improvement:

- Establish a feedback mechanism to gather input from patients, community members, and healthcare professionals for continuous improvement.
- Regularly assess and update medical protocols and practices to align with evolving healthcare standards.

ALIF Hospital is dedicated to becoming a cornerstone of health and well-being, fostering a healthier community through accessible, holistic, and patient-centered medical services.

Business Plan:

Modern Healthcare Center for Needy Communities

Executive Summary:

In response to the urgent healthcare needs of underserved communities, our venture aims to establish a state-of-the-art healthcare center equipped with advanced technologies and modern medical facilities. The center will prioritize patient safety, offer a comprehensive range of services, and operate on a sustainable model.

Introduction:

Our healthcare center will include specialized units such as ICU (Intensive Care Unit), CCU (Critical Care Unit), and modern surgical facilities. The incorporation of cutting-edge technologies, highly skilled medical professionals, and a patient-centric approach will be the cornerstone of our operations.

Objectives:

Quality Patient Care: Provide high-quality medical care with a focus on patient safety and well-being.

Access and Affordability: Ensure healthcare services are accessible and affordable for the community.

Sustainability: Establish a financially sustainable model to support long-term operations and growth.

Services and Facilities:

ICU and CCU Facilities:

- Equipped with advanced life support systems.
- Continuous monitoring and personalized care for critically ill patients.

Surgical Facilities:

- Modern operation theaters with state-of-the-art surgical equipment.
- Specialized units for various medical procedures.

Technological Integration:

- Electronic Health Records (EHR) for seamless patient information management.
- Telemedicine services for remote consultations and follow-ups.

Resource Bank and Financials:

Human Resources:

- Recruitment of skilled medical professionals, including doctors, nurses, and support staff.
- Ongoing training programs to enhance skills and knowledge.

Financials:

- Detailed cost analysis for construction, equipment procurement, and operational expenses.
- Revenue streams from healthcare services, insurance, and community partnerships.

Sustainable Model:

Community Partnerships:

- Collaboration with local businesses, NGOs, and government agencies for financial and resource support.
- Establishing health education programs to promote preventive care.

Resource Efficiency:

- Implementation of green technologies for energy efficiency.
- Recycling and waste reduction initiatives.

Patient Safety:

Principles:

- Adherence to international patient safety standards.
- Patient-centered care with a focus on dignity and respect.

Procedures and Regulations:

- Strict compliance with healthcare regulations and standards.
- Regular audits and assessments to ensure continuous improvement.

SOPs (Standard Operating Procedures):

- Clearly defined protocols for various medical procedures.
- Emergency response plans and drills for staff readiness.

Legal and Ethical Framework:

Compliance:

- Adherence to local healthcare laws and regulations.
- Ethical guidelines for medical research and patient care.

Patient Rights:

- Transparent communication with patients regarding treatment options and costs.
- Protection of patient privacy and confidentiality.

Conclusion:

Our healthcare center aspires to be a beacon of hope for underserved communities, providing world-class medical facilities while prioritizing patient safety, accessibility, and sustainability. This business plan outlines a comprehensive strategy to address the diverse healthcare needs of the community and ensure a brighter, healthier future for all.

Compassionate Care Initiative

Vision:

A society where healthcare is a fundamental right, accessible to all, irrespective of economic status, with a special focus on the poor, needy, vulnerable, and children.

Mission:

The Compassionate Care Initiative is committed to providing free, high-quality healthcare services to underserved communities, promoting a culture of compassion, health equity, and social responsibility.

Objectives:

Accessible Healthcare:

- Establish free community health clinics in underserved areas, ensuring proximity to those in need.
- Conduct regular health camps to reach remote populations and provide essential medical services.

Focus on Vulnerable Groups:

- Prioritize healthcare services for vulnerable populations, including the elderly, women, and differently-abled individuals.
- Collaborate with shelters and orphanages to ensure healthcare access for homeless and orphaned children.

Pediatric Care:

- Create specialized pediatric healthcare units to address the unique healthcare needs of children.
- Offer immunization drives and health education programs in schools and communities.

Preventive Healthcare:

- Emphasize preventive care through health education campaigns, promoting hygiene, nutrition, and healthy lifestyle choices.
- Provide regular check-ups and screenings for early detection of diseases.

Collaboration and Partnerships:

- Forge partnerships with pharmaceutical companies, medical suppliers, and NGOs to secure a sustainable supply of medicines and medical equipment.
- Collaborate with local governments and international organizations to enhance the scope and impact of healthcare services.

Community Empowerment:

- Train community health workers to provide basic healthcare services and health education.
- Facilitate skill development programs to empower individuals to contribute to the healthcare needs of their communities.

Digital Healthcare Access:

- Implement telemedicine services to extend medical consultations to remote areas.
- Develop a user-friendly mobile application for health-related information and virtual consultations.

Implementation Strategies:

Mobile Clinics:

- Introduce mobile healthcare units to reach underserved areas with limited access to medical facilities.
- Conduct regular health camps, offering a spectrum of medical services.

Volunteer Networks:

- Recruit and train volunteers, including medical professionals, to contribute their services on a regular basis.
- Organize medical missions with volunteer healthcare teams to address urgent health needs.

Awareness Campaigns:

- Launch public awareness campaigns to inform communities about available free healthcare services.
- Utilize various media channels, community events, and local influencers to disseminate healthcare information.

Advocacy for Policy Changes:

- Advocate for policies that support and enhance access to free healthcare services for the underprivileged.
- Collaborate with policymakers to address systemic challenges in healthcare delivery.

Monitoring and Evaluation: Establish a robust monitoring and evaluation system to track the number of beneficiaries, assess the effectiveness of healthcare interventions, and gather feedback from communities for continuous improvement.

The Compassionate Care Initiative is a testament to the belief that everyone deserves access to quality healthcare, regardless of their economic circumstances. Through collaborative efforts and a commitment to compassion, we aim to contribute to building healthier, more equitable communities.

Cost Breakdown and Analysis: ALIF Hospital

Infrastructure Costs:

- Construction of ALIF Hospital: \$2,000,000
- Mobile Healthcare Units (3 units): \$800,000
- Renovation and Equipment Installation: \$500,000
- Total Infrastructure Costs: \$3,300,000

Operational Costs (Annual):

- Salaries and Training for Medical Professionals: \$1,200,000
- Medicine and Medical Supplies: \$500,000
- Telemedicine Technology Setup and Maintenance: \$150,000
- Utilities and Facility Maintenance: \$100,000
- Administrative and Operational Expenses: \$50,000
- Total Annual Operational Costs: \$2,000,000

Community Outreach and Awareness:

- Marketing and Awareness Campaigns: \$100,000
- Community Health Worker Training: \$50,000
- Health Education Programs: \$30,000
- Total Outreach Costs: \$180,000

Technology Implementation:

- Development of Mobile Application: \$80,000
- Telemedicine Software Licensing: \$50,000
- IT Infrastructure: \$120,000
- Total Technology Costs: \$250,000

Miscellaneous Costs:

- Legal and Regulatory Compliance: \$30,000
- Insurance: \$20,000
- Contingency Fund: \$100,000
- Total Miscellaneous Costs: \$150,000

Grand Total Project Cost: $\$3,300,000 + (\$2,000,000 \times 5) + \$180,000 + \$250,000 + \$150,000$
 $= \$3,300,000 + \$10,000,000 + \$180,000 + \$250,000 + \$150,000$
 $= \$13,880,000$

Funding Sources:

- Public Grants (Fundraising): \$5,000,000
- Corporate Sponsorships: \$3,000,000
- Individual Donations: \$3,500,000
- NGO Partnerships: \$2,000,000
- Total Funding: \$13,500,000

Financial Viability:

- Net Project Cost (Grand Total Project Cost - Total Funding): \$13,880,000 - \$13,500,000 = \$380,000
- Return on Investment (ROI) Analysis: $(\$0 - \$380,000) / \$380,000 \times 100\% = -100\%$

Sustainability Model:

- Collaborate with local businesses for ongoing financial support.
- Establish partnerships with pharmaceutical companies for medication donations.
- Continuously seek government grants and philanthropic donations.

Patient Safety Principles:

- Adherence to international healthcare standards.
- Regular staff training on safety protocols.
- Continuous monitoring and improvement of safety measures.

Legal and Regulatory Compliance:

- Compliance with local healthcare laws and regulations.
- Regular audits to ensure adherence to standards.
- Legal consultation for ongoing compliance updates.

Standard Operating Procedures (SOPs):

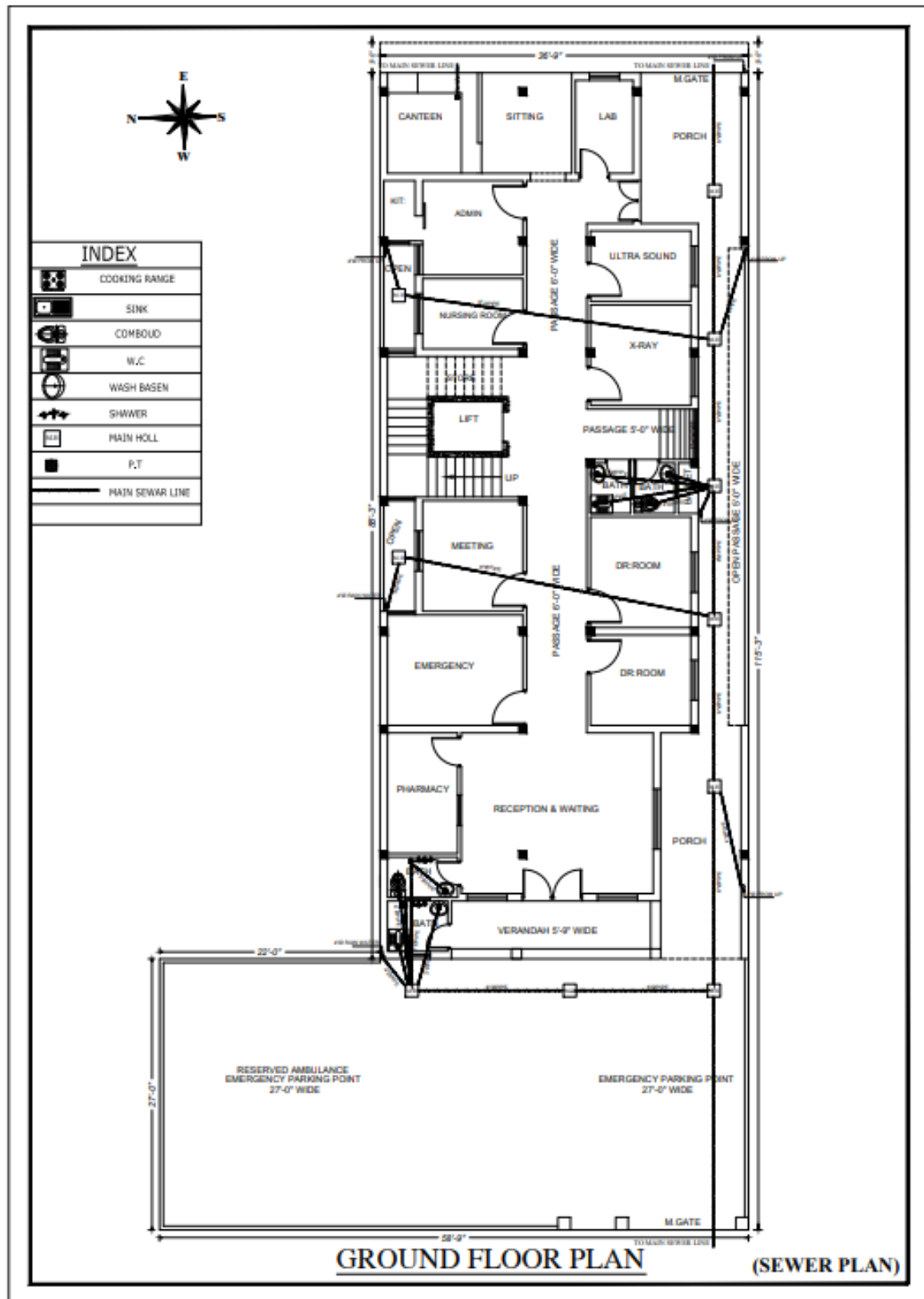
- Develop comprehensive SOPs for each medical service.
- Regular training and updates for staff on SOPs.
- Continuous refinement based on best practices.

This detailed breakdown provides a more in-depth view of the project's financial aspects, sustainability model, patient safety principles, legal compliance, and SOPs. Adjustments and further detailing can be made based on specific project requirements and local considerations.

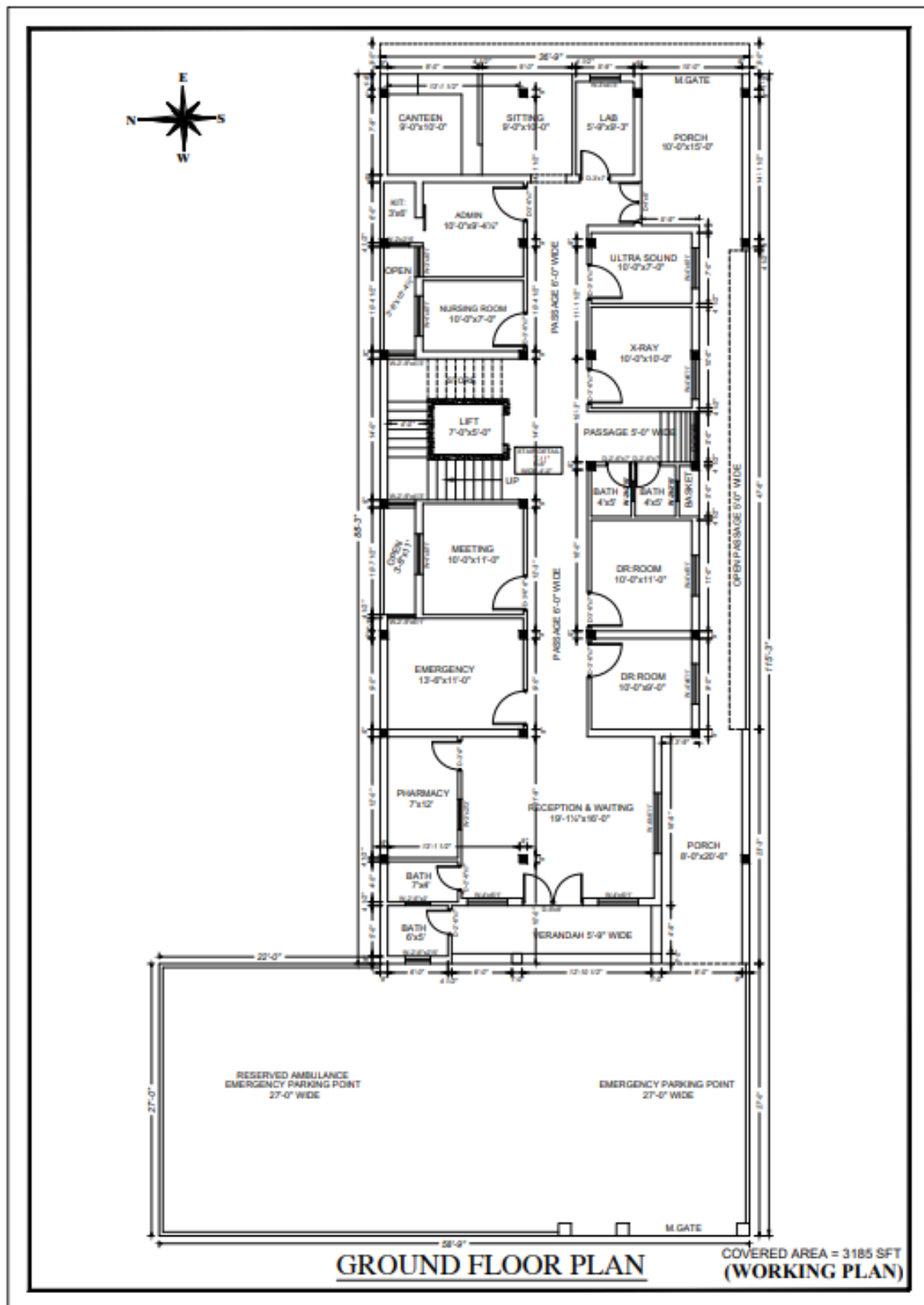
Architecting Tomorrow: Innovative Designs for a Sustainable Future – ALIF Hospital



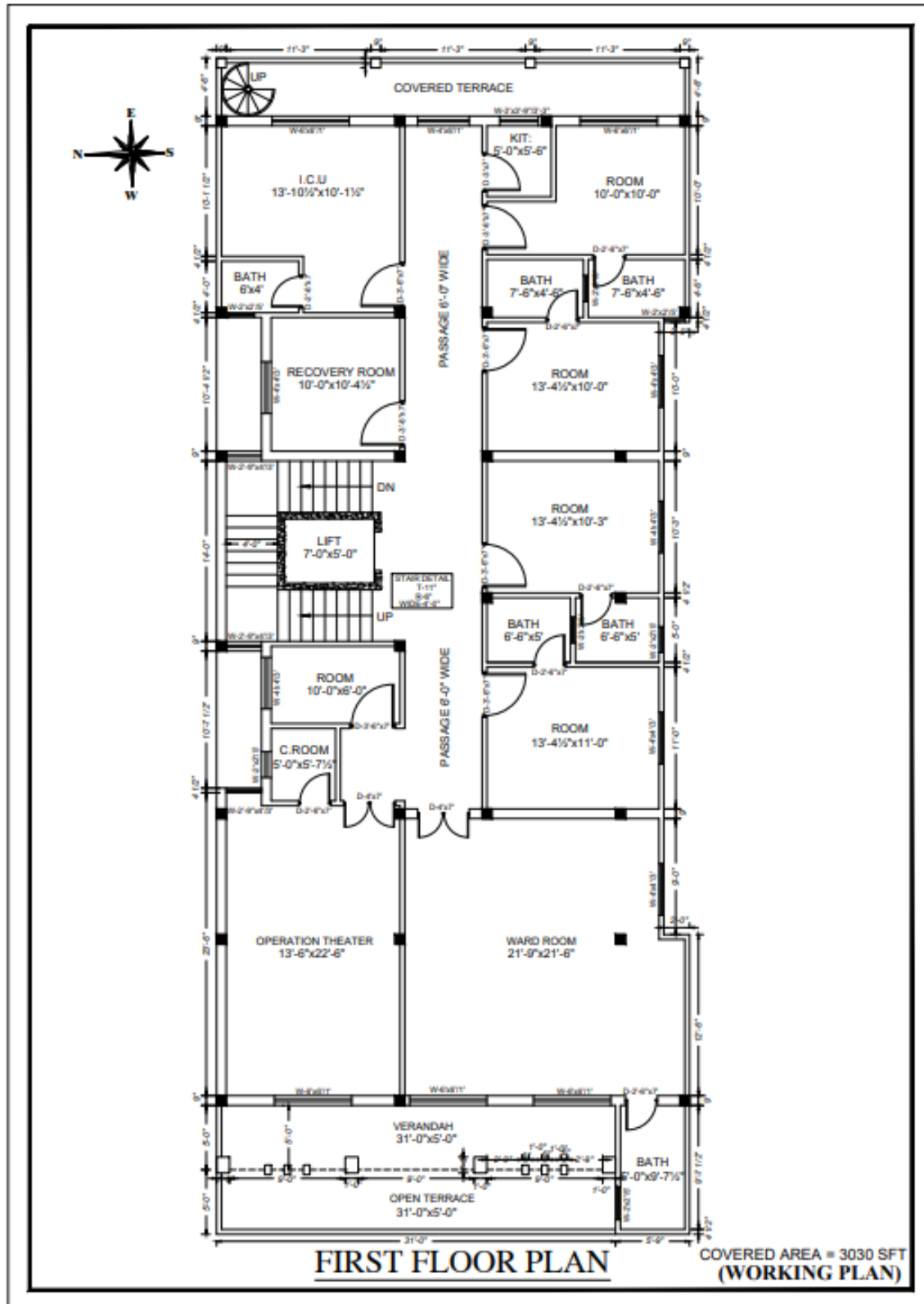
Architecting Tomorrow: Innovative Designs for a Sustainable Future – ALIF Hospital



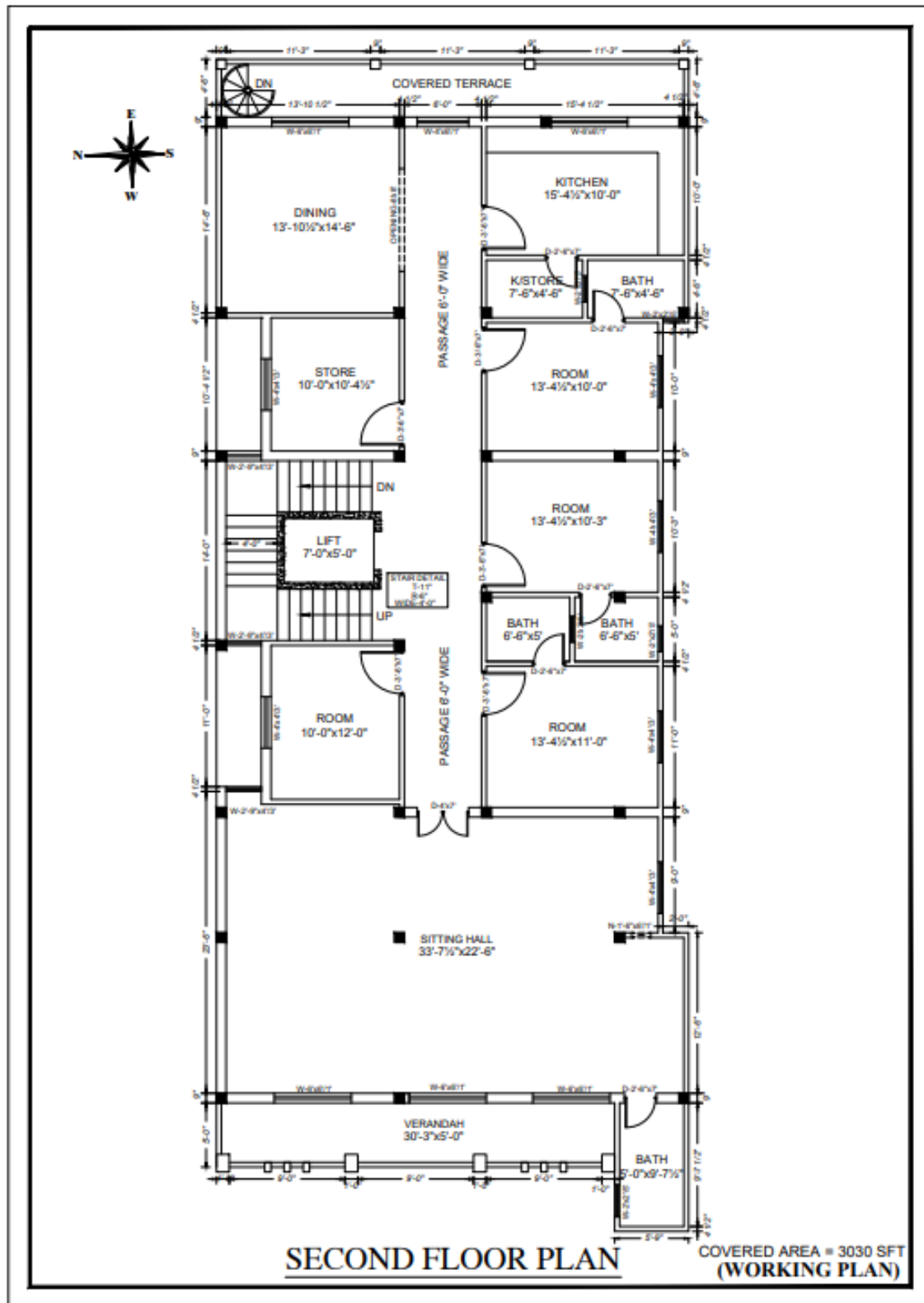
Architecting Tomorrow: Innovative Designs for a Sustainable Future – ALIF Hospital



Architecting Tomorrow: Innovative Designs for a Sustainable Future – ALIF Hospital



Architecting Tomorrow: Innovative Designs for a Sustainable Future – ALIF Hospital



Architecting Tomorrow: Innovative Designs for a Sustainable Future – ALIF Hospital

